



# **Implementing the Social Investment Package**

**Eurocities Social Affairs Forum  
Barcelona 5-7 March 2014**

**Evelyn ASTOR  
Policy Officer, Unit D1  
DG Employment, Social Affairs and  
Inclusion**

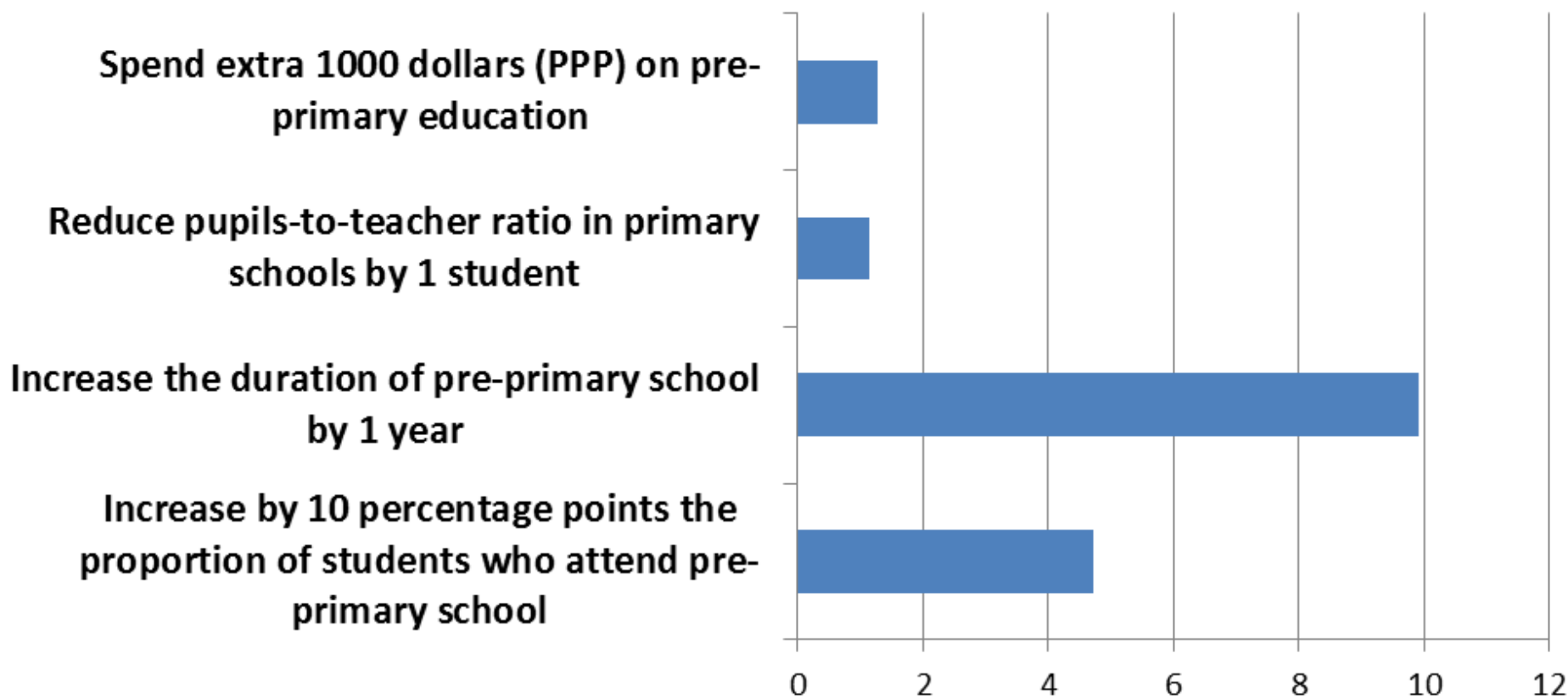
# **Social Investment Package**

## **Policy Framework (I)**

Investing **early and preventatively** in order to ensure that people live up to their full potential

- **Child policies, including early childhood education and care (ECEC)**
- **Prevention of early-school-leaving**
- **Youth guarantee schemes**
- **Active ageing**
- **Health prevention and promotion**

# Influence of early education policies on PISA assessment scores



**Score point increase in PISA reading assessment tests**

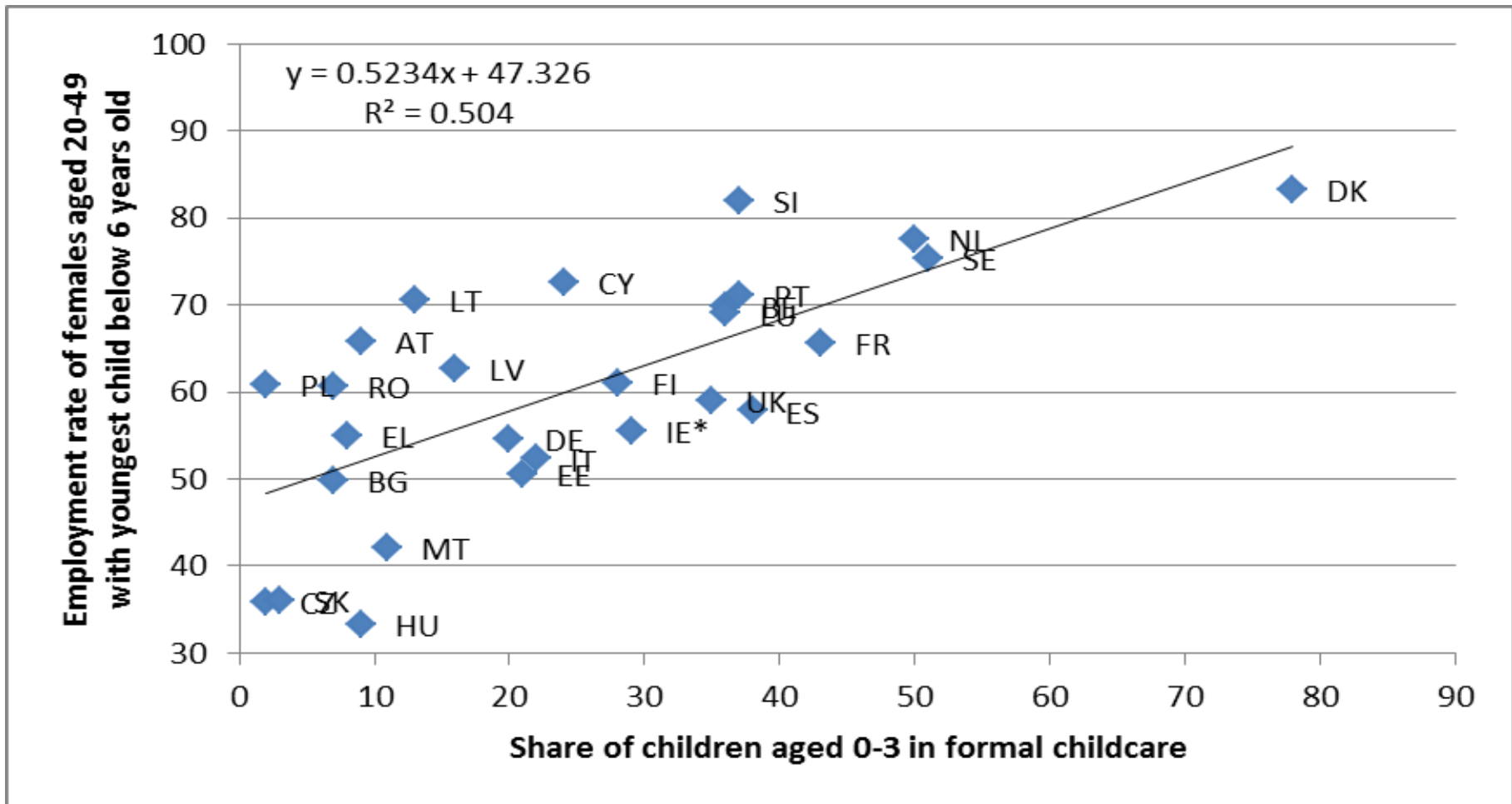
**OECD (2012)**



European  
Commission

# More accessible early childhood education and care is also linked to greater female employment rates

Share of children aged 0-3 in formal childcare and employment rates of women 20-49 with young children (2010)

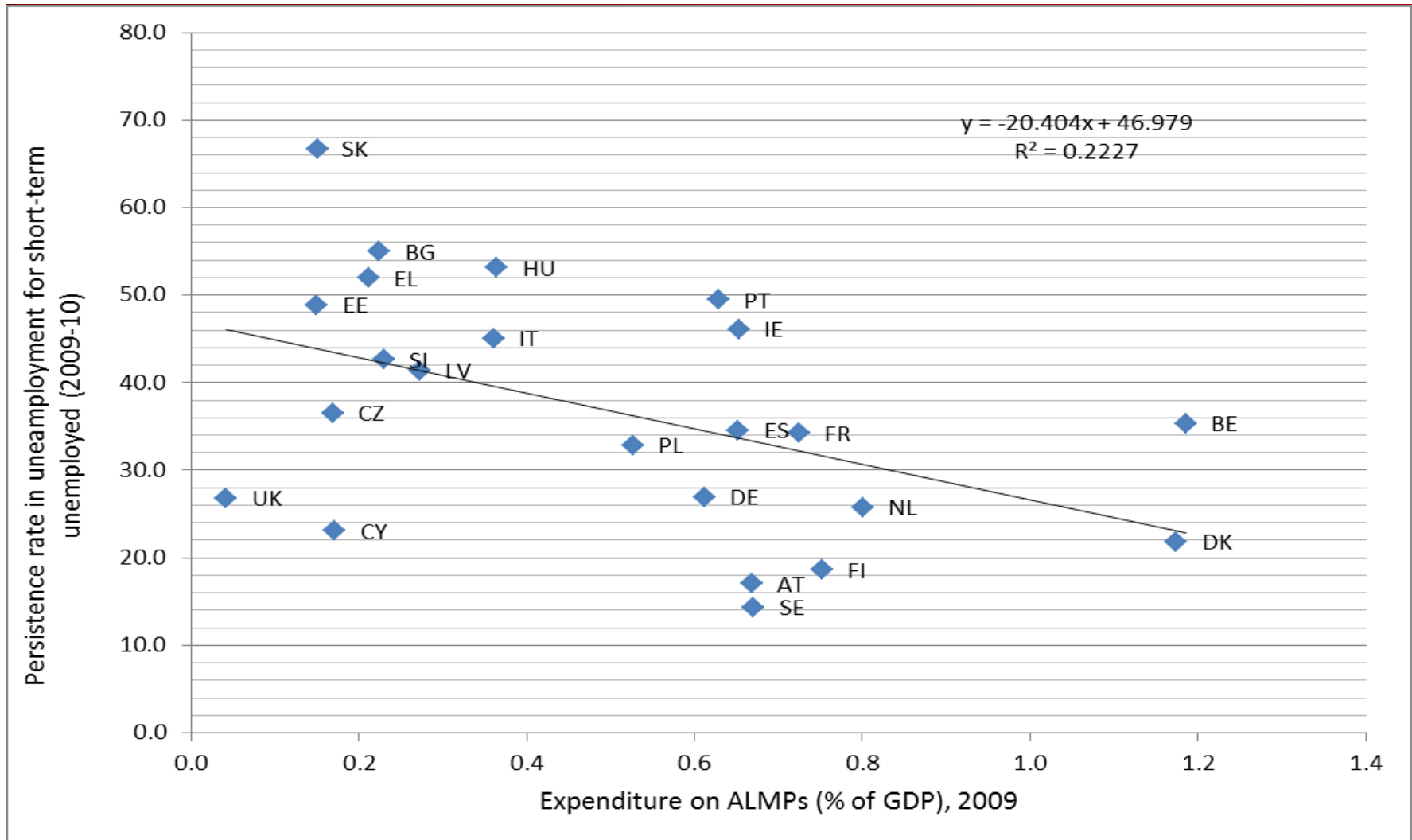


# **Social Investment Package**

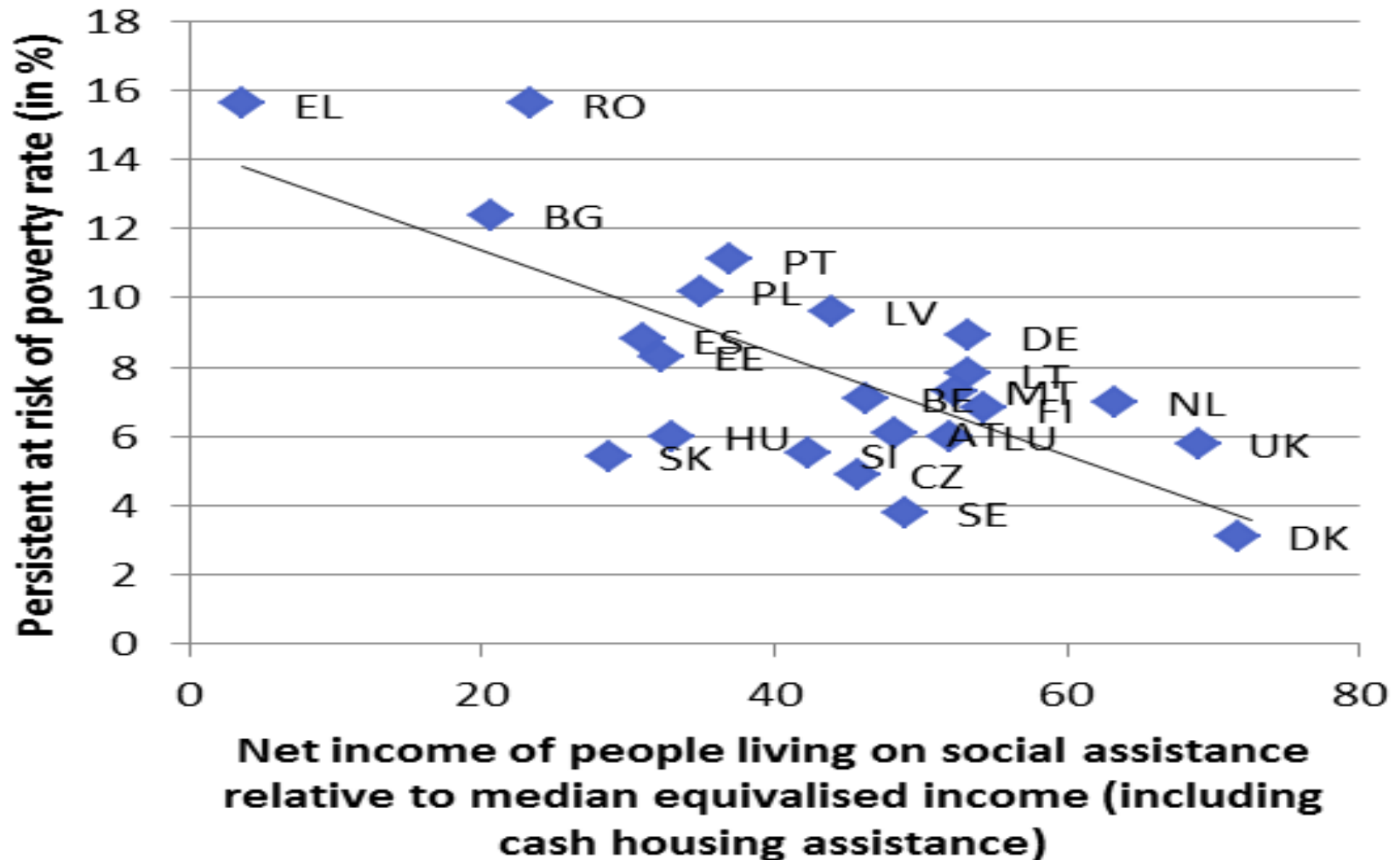
## **Policy Framework (II)**

- **Joining up adequate benefits and enabling services** to support people's inclusion in society and the labour market
  - **Adequate income support**
  - **Quality services** (affordable care services, housing, transport, basic bank accounts)
  - **Activating and enabling policies** to prepare (re)entry in the labour market (jobsearch assistance, lifelong learning, upskilling)
- **Promoting inclusive labour markets**
  - **Addressing workplace discrimination**
  - **Flexible working arrangements**
  - **Adapted workplaces**

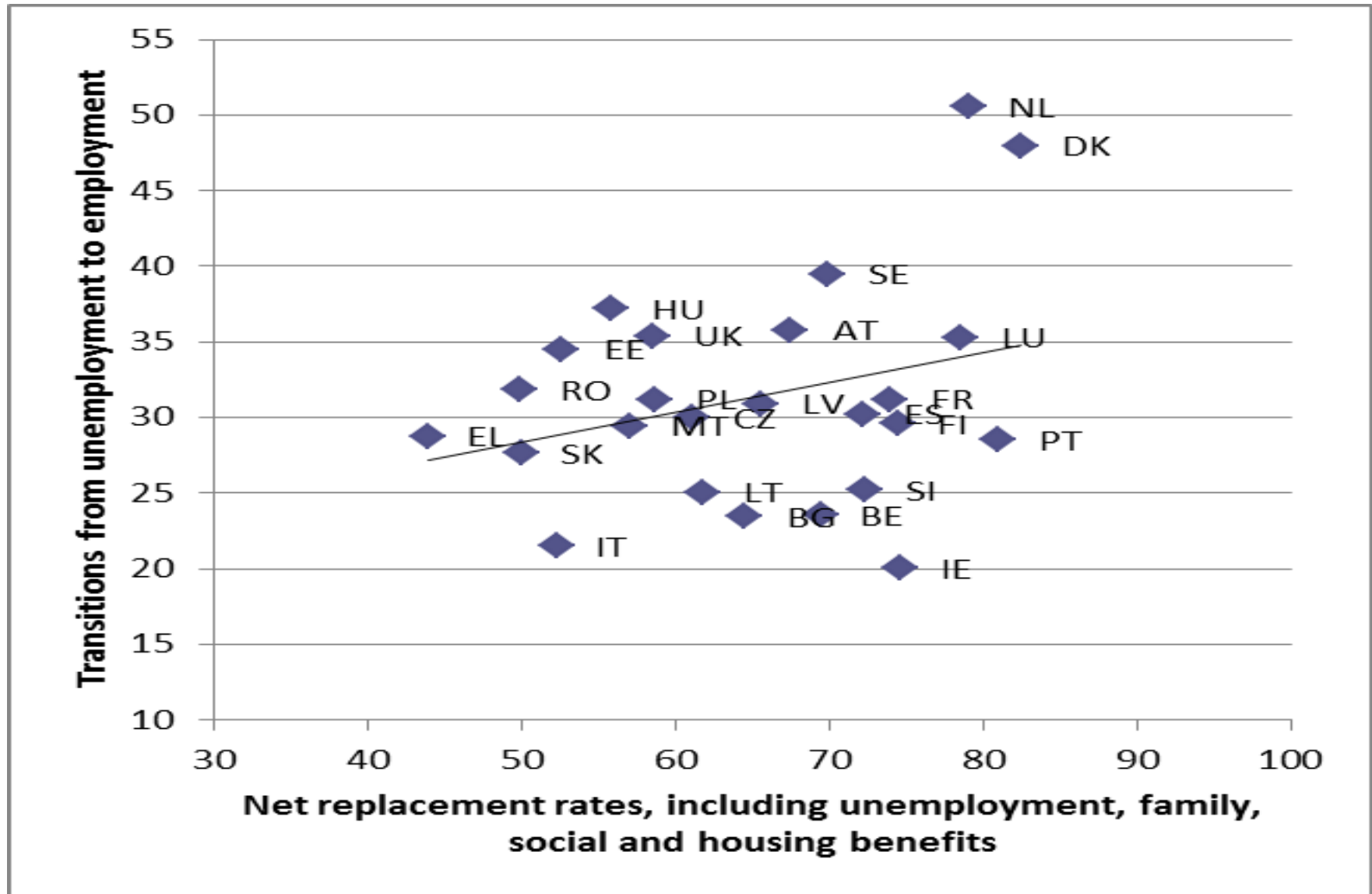
# The relationship between activating policies and persistence of unemployment



# Adequacy of social transfers and the persistence of poverty



# Adequacy of benefits are not shown to prevent returns to employment





# **Social Investment Package**

## **Policy Framework (III)**

**Simplifying the administration of benefits and services** to avoid unnecessary overlaps and make it easier to access support

- **One-stop-shops to access benefits/services**

**Removing tax-benefit disincentives** to entering the labour market and addressing poverty traps

- **Creating tax and benefit incentives to make work pay**
- **Tapering income thresholds of means-tested benefits**

# Implementation

## Primarily at Member State level

- National, regional, and local authorities
- Social Partners, NGOs, social enterprises, civil society, etc.
- The degree of responsibility varies depending on how social policies are organised

The **EU supports and complements** the activities of the Member States.

- Guidance, monitoring, exchange of good practices, financial support

# **Specific Commission activities**

## **Some examples relevant to cities**

### ***Studies and pilot projects***

- *Call for proposals to support integrated social service delivery*

### ***Analytical support***

- *Methodology for designing reference budgets*

### ***Monitoring of social developments***

- *Developing poverty maps with the World Bank to identify local and regional pockets of disadvantage*

### ***Knowledge-sharing activities***

- *Social Investment Knowledge Platform*

# EU Funds

## European Social Fund

- Main budgetary instrument for supporting structural reform and investment across EU Member States in the area of employment and social policy.

## Fund for European Aid to the Most Deprived

- Addressing extreme forms of material deprivation

## Programme for Employment and Social Innovation

- Supporting social policy innovation with the aim of scaling up successful programmes
- Micro-financing to provide start-ups for entrepreneurs
- Supporting EU-level NGO networks (**including Eurocities!**) that provide a bridge between on-the-ground activities and EU-level policies

# Outcome of the 2013 Semester: Country-Specific Recommendations

In 2013, nineteen **Member States** received **recommendations related to poverty or social inclusion, concerning:**

- *Adequacy and coverage of social protection benefits (8)*
- *Access to quality social services (3)*
- *Improving the efficiency of social assistance (10)*
- *Employability of disadvantaged/vulnerable people(6)*
- *Confronting childhood poverty (5)*
- *Inclusion of migrants/Roma (10)*

*\*Many CSRs covered more than one of these areas at once*

*To conclude....*

# For more information...

## ***Social Investment Package***

***<http://ec.europa.eu/social/main.jsp?langId=en&catId=89&newsId=1807&furtherNews=yes>***

## ***Policy Roadmap for the 2013-2014 Implementation of the Social Investment Package***

***<http://ec.europa.eu/social/BlobServlet?docId=11150&langId=en>***

## ***Investing in Social Europe brochure***

***<http://ec.europa.eu/social/main.jsp?catId=738&langId=en&pubId=7515&type=2&furtherPubs=yes>***

## ***Social Europe guide – Social policies***

***<http://ec.europa.eu/social/main.jsp?catId=738&langId=en&pubId=7683>***

## ***Social Europe guide - Social economy and social entrepreneurship***

***<http://ec.europa.eu/social/main.jsp?catId=738&langId=en&pubId=7523>***